



mobilise
TECHNOLOGY
TAKING BUSINESS MOBILE

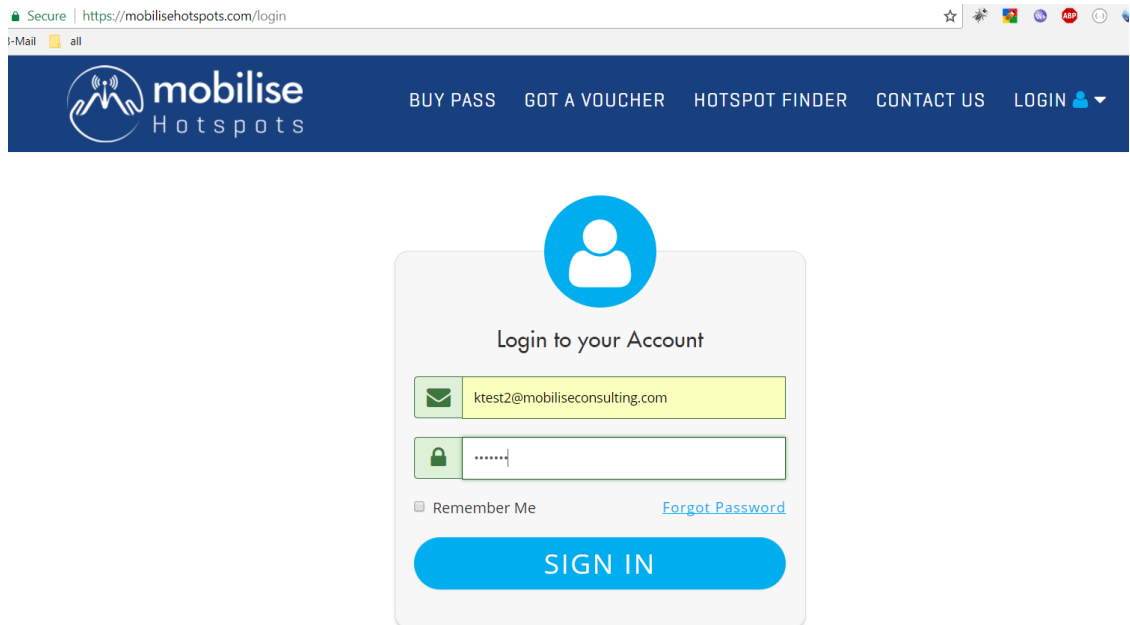
MOBILISE HOTSPOT

USER GUIDE – PC/MAC CLIENT

Windows PC or Mac client:

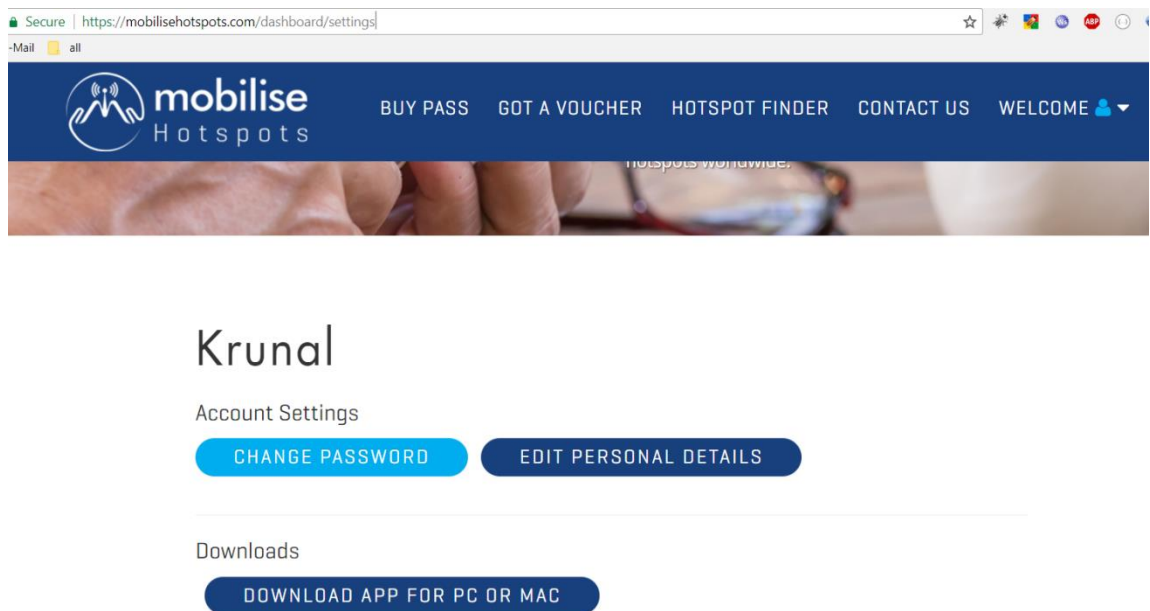
Once you have subscribed to Mobilise Hotspots by Purchasing an online subscription (currently disabled) or by activating a Voucher, please follow the following steps to use the service on PC or Mac.

1. Log in to your account on the Mobilise Hotspots Portal.



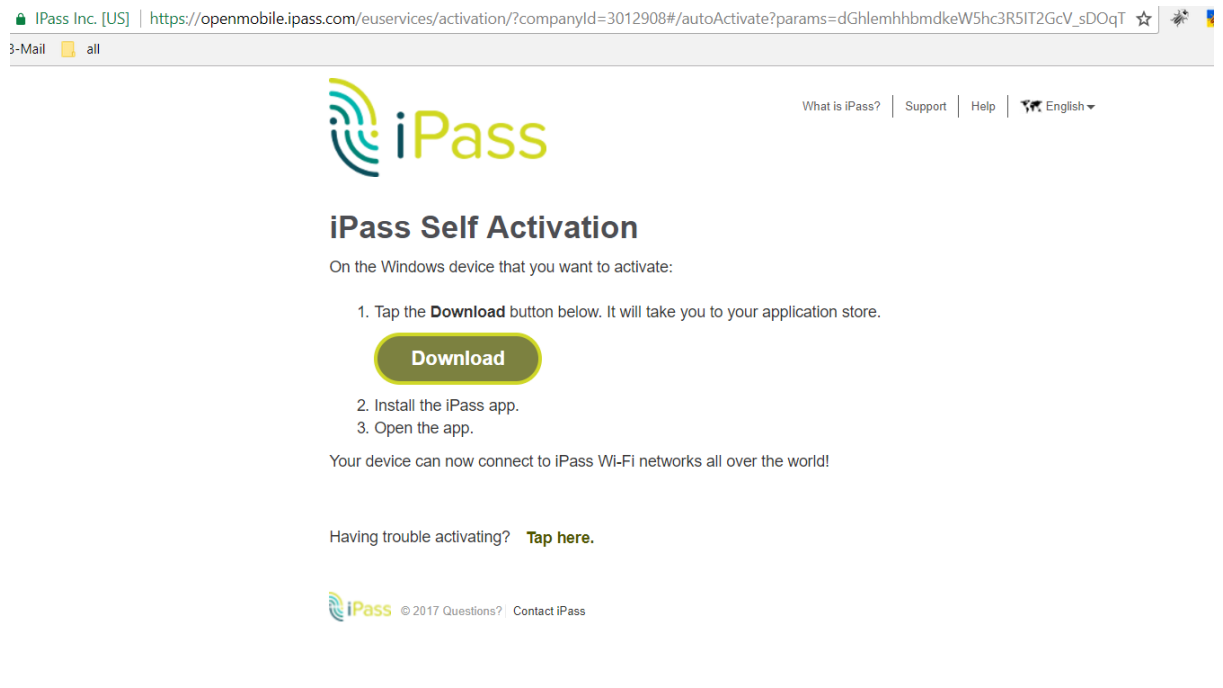
The screenshot shows a web browser window with the URL <https://mobilisehotspots.com/login>. The page features the Mobilise Hotspots logo and navigation links: BUY PASS, GOT A VOUCHER, HOTSPOT FINDER, CONTACT US, and LOGIN. The login form is centered and includes a user icon, the title "Login to your Account", an email input field containing "ktest2@mobiliseconsulting.com", a password input field with masked characters, a "Remember Me" checkbox, a "Forgot Password" link, and a prominent blue "SIGN IN" button.

2. Go to the <https://mobilisehotspots.com/dashboard/settings>

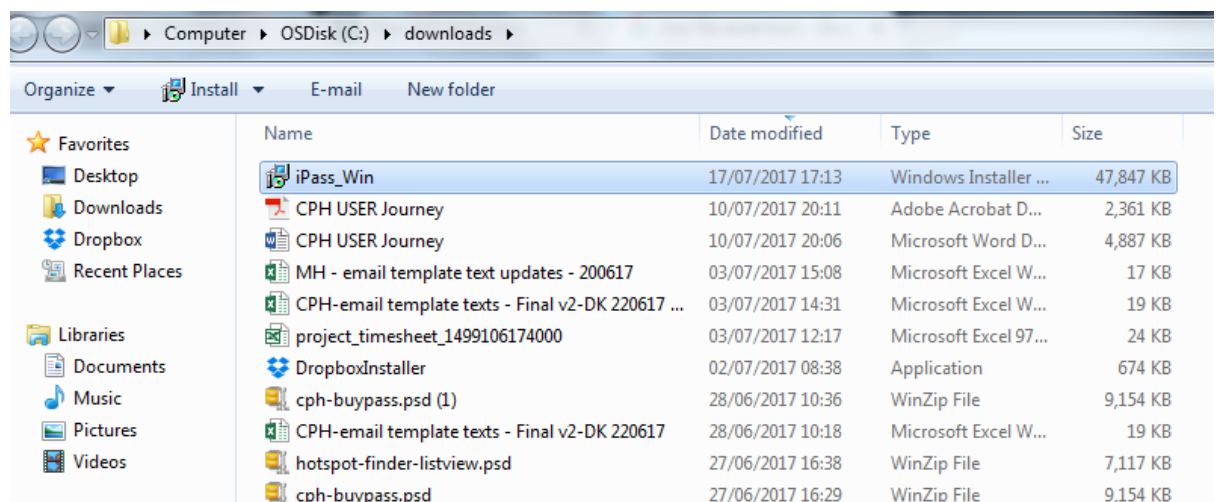


The screenshot shows the dashboard settings page for a user named "Krunal". The page header includes the Mobilise Hotspots logo and navigation links: BUY PASS, GOT A VOUCHER, HOTSPOT FINDER, CONTACT US, and WELCOME. The main content area displays the user's name "Krunal" and "Account Settings" with two buttons: "CHANGE PASSWORD" and "EDIT PERSONAL DETAILS". Below this, the "Downloads" section features a button labeled "DOWNLOAD APP FOR PC OR MAC".

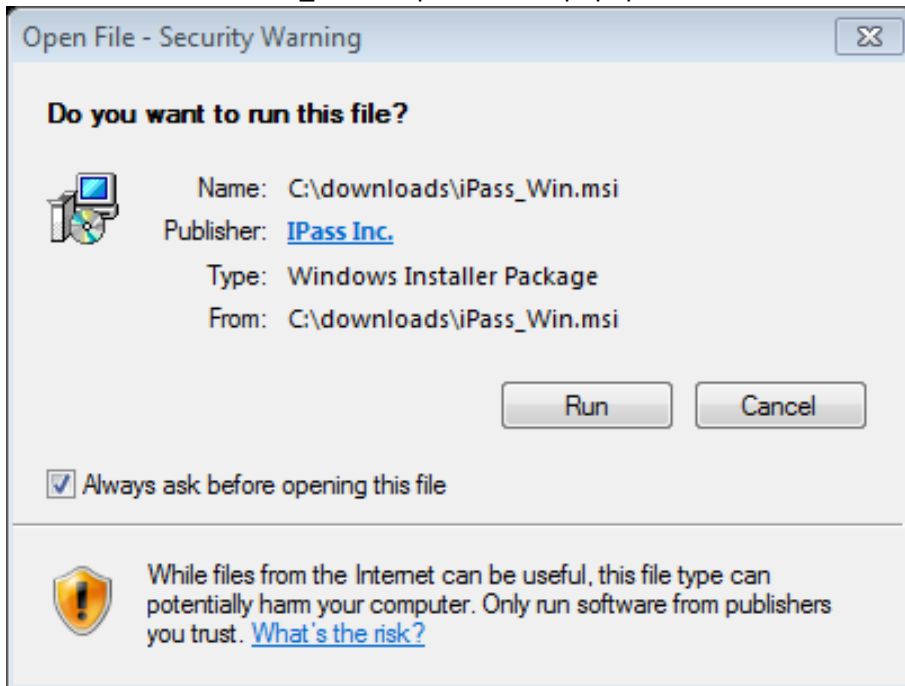
3. Click on “Download App for PC or Mac” and this page will open:



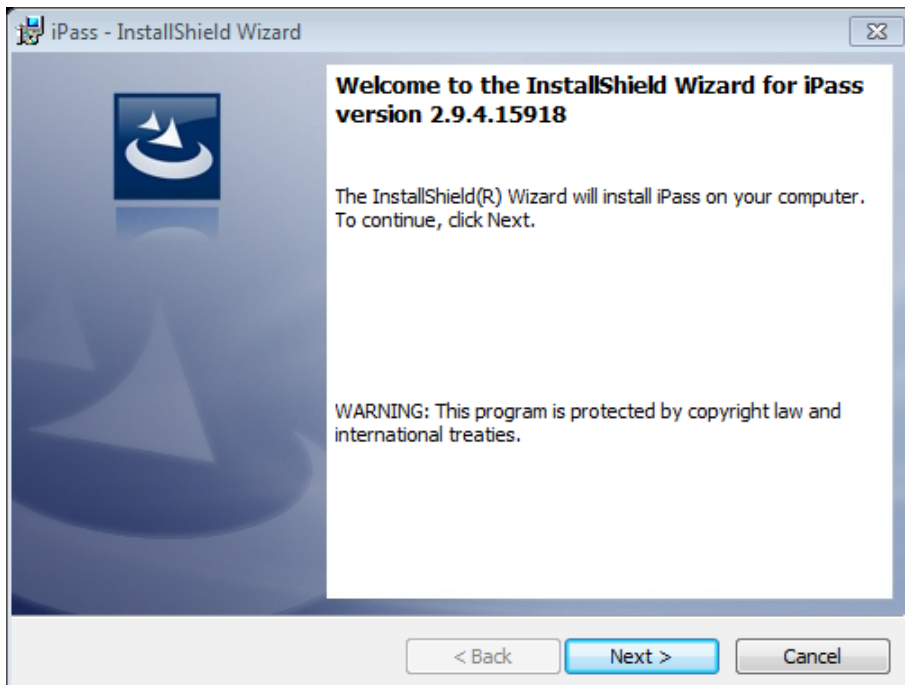
4. Click on “Download” and a .msi file will be downloaded.
5. Open the .msi file from the download folder.



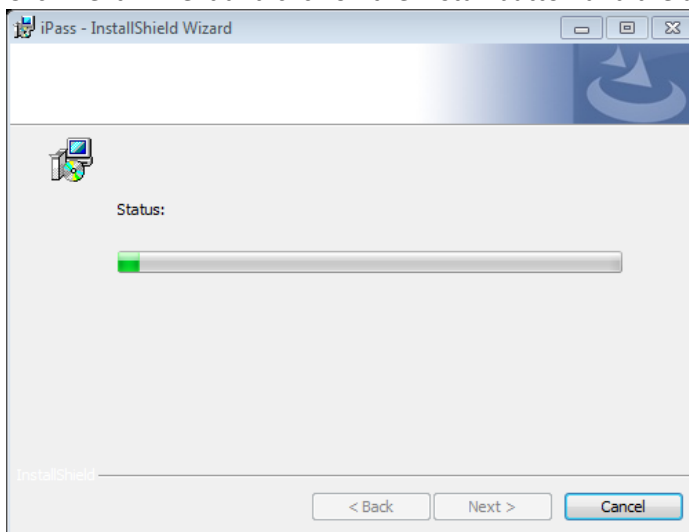
1. Double click on the iPass_Win to open the exe popup and click on Run



6. Click "Next"



7. Click Next -> Next and click on the Install button and the app will be installed.



8. When the Installation is successful, the app will open the Windows client screen below, with all the nearest Wi-Fi networks displayed. It will show also the supported iPass networks. You can choose any iPass supported network and connect with it. There is a Disconnect button shown, which allows you to sever the connection to any connected Wi-Fi network.

